

In Touch With...

Walton

Supporting each other through the Corona Virus pandemic

MAY 2021
Issue 68



Hi,

With lock down easing, life in Walton is getting back to some degree of normal. Many people are actively planning or eagerly anticipating

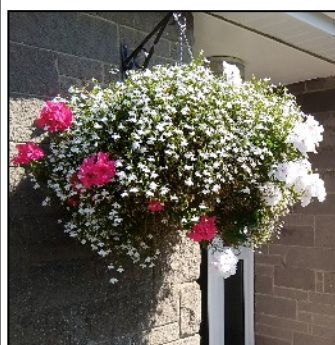
opportunities for travel and social interaction. The Royal Oak is serving outdoors, people passing by have tidy hair and crossing main road is once again a challenge. Many of us are feeling more secure having had at least one vaccination. It is therefore with an air of optimism that I write this paragraph, hoping that village events will again be possible in the coming months. Of course, for this to be possible, everyone must play their part. It is important that people use the Play Park, MUGA and other village facilities in line with the current guidelines and minimise the remaining risk of infection when in these settings.

I have been Chairing the Parish Council for almost a year now and it has been an interesting challenge. I have learned a lot about the village and about local government and foresee some major changes and developments on the horizon. The structure of regional government is likely to change in the coming few years and this will have an impact on how services are provided to each of us. I would urge you to look on the web at the two rival options: 'Stronger Somerset' or 'One Somerset' and have your say. As always, please also visit our website at <http://www.waltonpc.org/> and let us know your ideas.

John Harvey

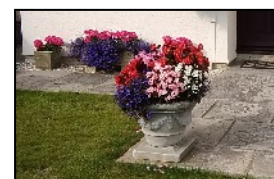
Walton in Bloom 2021

How bright does your garden bloom?



This annual event judges all gardens that can be seen from the road and all homes around the village are automatically entered. Colourful gardens are looked

at and prizes awarded for hanging baskets, containers, and generally beautiful displays. This is advance notice that garden judging this year will take place on Friday 30th July



The village allotments are also looked at annually and prizes awarded for abundance and originality -

The allotments will be judged this year on Friday 30th June

Street & Walton Men's Shed.

The Street & Walton Men's Shed is open 4 days a week with two sessions of 3.5 hours each day on Tuesdays, and Thursdays and one session on Monday and Wednesday mornings, with the possibility of two more sessions if demand requires it. At the time of writing, we will still be restricting numbers to 6 members a session for social distancing requirements. **(Places for these sessions must be booked in advance)**. It will probably be late June before we can have unrestricted sessions.

The Tuesday afternoon session is solely for ladies, who do everything from crocheting to wood carving and upholstery. As with the men's sessions there is room to do almost any type craft work, turning or woodwork, we also hope to be able to do metal lathe work in our well-equipped workshops.

We hope that we will be able to take part in several annual fetes and fairs such as the Merriman Park Fun Day (planned to be held on Saturday 4th September), Walton fun day and the Street Christmas Cracker events if they happen this year, all of which are great places to promote the Men's Shed, recruit new members and raise funds. We are also



still open to donations of unwanted tools from sheds and garages that you may have had time to sort out during lock down, so please contact me using the details below.

The aim of the Men's Shed is to provide a place where older men and women can come to socialise and work on projects in a safe welcoming atmosphere; this is even more important at this time while we are facing restrictions in what we can do or people we can meet.

We are still looking for new members, both Ladies and Gents, ring Brian Bastable on 01458 443940. Look out for our new web site opening in May, search 'Street & Walton Men's Shed'

I am also available to talk about opening new Sheds in Somerset as part of my work as a UK Men's Shed Ambassador, my Email address for that and the Street & Walton shed is brian.bastable@ukmsa.org.uk
Brian Bastable - Street & Walton Men's Shed

Walton W.I.

With the slight easing of covid restrictions, some members have been able to resume Monday croquet sessions, by appointment, in a local garden. Meanwhile, our craft enthusiasts have continued to make knitted items at home for future use in the Neonatal Intensive Care Unit at Musgrove Park Hospital when delivery is permitted. Local walks, daily jokes, brain teasers,



online features and other items of interest have been shared on our Facebook page. Meetings with members in their gardens have also now been enjoyed in fair weather, as has gardening.

Hopefully, in May, with our second vaccinations completed and the further easing of restrictions scheduled, our table tennis players will be able to resume their Tuesday afternoon sessions in the village hall.

Following the start of a new financial year, our membership so far is 45 including 4 new members. These numbers will preclude us from having any evening indoor meetings at present, but we are hoping to have our AGM with a picnic in the summer.

Jo Haydon



James Neal - At the end of June, myself and 4 colleagues will embark on an epic 1000 mile bike ride from John O'Groats to Lands' End in aid of the Great Western Air Ambulance Charity (GWAAC). We will cover the length of Britain in 9 days, cycling between 100 and 120 mile a day. Our route will take us over the Cairngorms, through the Lake District,

across the Midlands, around the Mendips and over Dartmoor. In total we will climb approximately 50,000ft (Mt Everest is only 30,000ft). We aim to raise £2500 for GWAAC, who depend on charity donations to operate. Last year GWAAC carried out 1726 missions, averaging 5 seriously injured patients a day. If you'd like to donate, please visit JustGiving and search James Neal or use this link

<https://urlsand.esvalabs.com/?u=https%3A%2F%2Fwww.justgiving.com%2FJOGLE-June21&e=1997c094&h=1a65be9e&f=y&p=n>



John and Claire - If somebody had said to us a few years ago that we would be running a marathon, we would have laughed at them but on the 3rd October this year, that is exactly what we will be doing! We will be running the London Virtual Marathon, 26.2 miles, starting and finishing in Walton.

We started running together about 3 years ago at Street Park Run, struggling to get around the 3-mile route. From then, we have run various distances up to a half marathon, raising money for charities along the way and having fun while we run.

[https://www.sponsorme.co.uk/clairecostanza-\(1\)/virtual-london-marathon.aspx](https://www.sponsorme.co.uk/clairecostanza-(1)/virtual-london-marathon.aspx)

East Mead Field

Over the last few years this area is slowly being transformed into a more wildlife friendly space. Hedges have been planted to create windbreaks and wildlife corridors,



further fencing and a gate is being installed to create a distinct area with its own pedestrian access from the lane.



several apples trees have been planted as the beginning of a small orchard area, and this year



There is no parking in East Mead Lane so in the future when all the works are completed, this will be a place for you and your family to visit on foot.

HOLY TRINITY CHURCH WALTON

We have been delighted to be back inside our church since Easter Sunday even though life is not back to 'normal' yet. We still have socially distanced seating and everyone has to book one of the limited places. There is no singing or coffee afterwards but none the less, being back in our church is meaningful and special to us.

We have enjoyed Hilda playing the organ, Andy on his guitar or banjo, Suzie on keyboard and Ana playing her violin at different times during these last week's and we have made



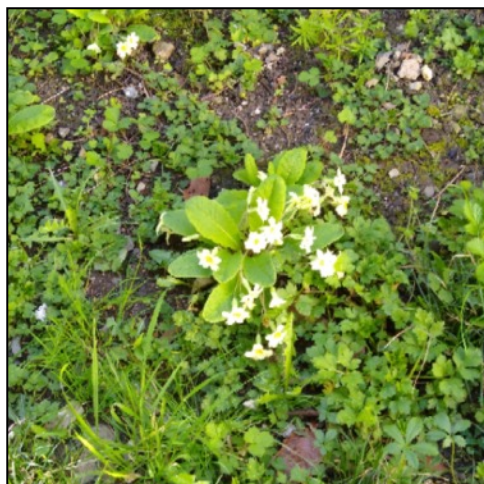
sure we go out into the Churchyard to sing the last hymn before we go our separate ways. Thinking of singing in the Churchyard reminds us to listen to the birdsong all around us. We have taken a special interest as we have joined together with our Diocese, Somerset

Wildlife Society and A Rocha to become an Eco Church. We have bronze award already and are concentrating on outside at the moment. With the health of the world in people's minds very much at the moment, we will do what we can in our small part of the country. We are proud owners of 7 bird boxes, 4 bug hotels and a magnificent owl box. An area is being left wild and we intend to do some planting involving some of the children from the school. We hope this will



encourage birds, insects and butterflies. We are fortunate to have a botanist living nearby who has said she will come and survey what is growing. Here are some photos of the owl box, bluebells and primroses growing in different areas of the Churchyard. We also welcome back the

swallows to the South porch. We have two nests there yearly. Terribly messy but a joy to welcome them on their return.



Sandra Gristock

WALTON TEXTILE GROUP

When permitted, the group has met on Walton Playing field in small groups, so we have been able to keep in touch, discuss our projects and also bring work to show the group.



We hope to resume our twice monthly sessions in Walton Village Hall on Monday July 12th (1.30 pm - 4.00 pm). We have all missed meeting up so much and can't wait to get back.

We cover a wide range of activities including experimental art quilts, dyeing, traditional quilting and small machine or hand sewn projects. During the lockdowns we have all been busy in different ways making scrubs and bags for the NHS, quilts, bags, toys, bunting, Christmas decorations, advent calendars and covering chairs to name just a few projects.

We welcome new members so if you are interested in joining us, please email waltontextiles@gmail.com

<https://waltontextiles.wixsite.com/website-1-1>

Neighbourhood Watch

During the Lockdown period the criminals have been very active both with numerous electronic frauds and more recently with an increase in the theft of catalytic converters from vehicles. These exhaust components contain precious metals such as Rhodium; Platinum and Palladium. The villains have realised that the C Converters on Hybrid vehicles are not in use when the vehicle is running on its battery, and therefore are less likely to be corroded. It is therefore worth more as scrap value.

The current high value of scrap metal has also attracted villains to diesel exhaust systems because they have a particulate filter which also has higher scrap value.

As well as hybrid vehicles, apparently vans and SUV's are particularly popular targets because their height tends to make it easier to get access to exhaust system under the vehicle

To reduce the risk of having your catalytic converter stolen you should

Park in a locked garage if possible or park in a well-lit area.

Park close to fences, walls or a kerb with the exhaust being closest to the wall etc, to make a theft more difficult.

Finally don't think it could not happen here because, in the past, some of our Walton residents found it had happened to their vehicles and how expensive it was to get their vehicle repaired.

Bob Musgrave

Highways

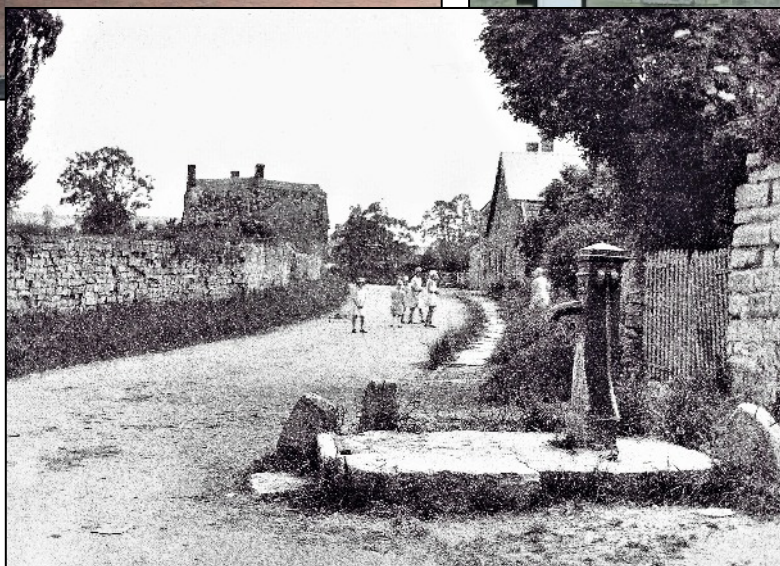
The parish council has asked for road markings around the village, and especially on the A39 Main Street, to be repainted in order to improve road safety, with additional 'SLOW' and 30mph markings also requested.

Ongoing issues with the road surface, drains etc. are reported on a regular basis as required and please remember that potholes [along with any other road faults] can be reported by you, directly to Somerset County Council at www.somerset.gov.uk/roads-and-transport/report-a-pothole-or-road-defect/

The Visual History Project

This is a project set up by the parish council to record the many changes that happen over time around the village. It is also a record of some of the village events that have happened over time. Some older photographs are also kept, for example of sports teams and school years. Recently photographs of changes and events have included both the new housing developments, and events held during “lock down” .

Do contact us if you have photographs of some of the many ongoing changes around the village.
clerk@waltonpc.org



These images of the building of Foxlands, the new bungalows at Highfields Close, The post office when it was open and the building now, and an old and new view of South Street from Main Street

Walton Community SpeedWatch

The SpeedWatch Team was back at the roadside as soon as lockdown eased. We were out eleven times during March and have already recorded eight sessions during the first part of April. We always have the support of our local PCSO Tim Richards as well as the Speed Enforcement Unit who are out with motorbikes and cars. We receive regular feedback about our sessions. If you are concerned about the speed of traffic through our village and have a couple of hours a month to spare, please volunteer to help. Geoff, Bridget and Marilyn



Our email address is:
waltonspeedwatch@gmail.com

Meet & Greet Knit & Natter

Hello to all our Meet and Greet and Knit and Knatter friends. I hope you are all well and coping in these strange times. I have taken this opportunity to update you all.

After a lot of consideration and taking into account all the logistics of starting up our groups again I am afraid the conclusion is to start up in

March 2022.

I am sorry if this is disappointing news but rather than list all the negatives I hope you will understand the decision.

If any body feels they can find a way of taking the reigns for either one or both events please contact me on 01458 445380. In the meantime take care and stay safe.

Jenny

Bus Back Better

The newly formed Somerset Bus Partnership is supported both by councillors and by bus user groups across Somerset and it will seek to work with local town and parish



councils and with Somerset County Council to input into a Bus Enhancement Partnership for Somerset that incorporates both what current bus users need and take steps to facilitate more Somerset residents to switch from using private cars to travel by bus.

At 10 journeys per resident, Somerset currently has the fourth lowest bus passenger journeys per population in England. It is the lowest in the South West.

Bus passenger journeys in Somerset have decreased by more than some 40% over the past decade.

Said Peter Travis, "The new Bus Strategy provides the funding to reverse this decline in passenger numbers in Somerset and see Somerset playing its part in the Government's leveling up and green agendas by launching a Bus Enhancement Initiative for Somerset. Somerset needs to commit to this initiative by June 2021."

We are looking for bus users or people who may be interested in buses or concerned about the Climate Emergency who would like to join in and help work out how we can take advantage of Bus Back Better. Do please get in contact:

Peter Travis, Somerset Bus Partnership
01373 831726
SBPMendip@outlook.com

The parish council website has been updated to make it more user friendly and accessible, why not take a look?

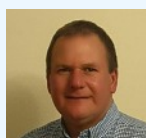
www.waltonpc.org

Archive information will be added slowly along with new information and articles. If there is anything that needs updating or that you would like to see added then please get in touch using the contact form on the website, or email the clerk direct : clerk@waltonpc.org

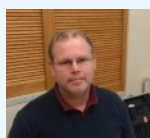
Your Parish Councillors:



Cllr. John Harvey - Chairman



Cllr. Bob Collins vice chairman



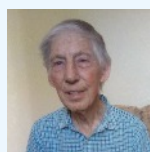
Cllr. Richard Crossman



Cllr. Simon Loader



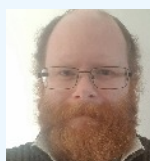
Cllr. Richard Vowles



Cllr. Bob Musgrave



Cllr. Lisa Whitty



Cllr. M. White

- Cllr. Angie Greuter

Dates of future parish council meetings: [These are all Fridays]

June 11th 2021
July 9th 2021
August 13th 2021
September 17th 2021
October 8th 2021
November 12th 2021
December 10th 2021

All at 7pm in the Village Hall Lounge or online via Zoom depending on current government restrictions - this will be shown on the top of the agenda of each meeting

Annual Meeting of the Parish -

Set for the 21st May at 7pm this will be at the village hall with all COVID restrictions in place including social distancing and mask wearing. It will be a very scaled back event please keep an eye on the notice boards and website for the agenda.

Walton Parish Clerk - Helen Moore

clerk@waltonpc.org
07399 040 667

Walton Parish Council c/o
21 Bere Lane Glastonbury BA6 8BD

Please note that the Clerk works part time and you may not receive an immediate reply

Cllr Matt Martin

Mendip District Council

cllr.martin@mendip.gov.uk
01458 860344



Walton Parish Council parish news - talking about Walton copyright 2004-2021 designed and compiled by H Moore edited by H Moore and J Harvey

Articles are for information or consideration for inclusion in future editions can be sent to the parish clerk. Articles in this newsletter are gathered from the parish council, village and public sources & contributors. The information and views are accepted as factual & honest. Information or views expressed in articles are not necessarily those of the editors or the parish council.

This News letter is printed by the Walton Press

Footpaths...

The footpaths around the local area continue to be well used and any issues with them can either be



reported to the parish council or directly to Somerset County Council on their interactive map. At

<https://www.somerset.gov.uk/waste-planning-and-land/public-rights-of-way/>

Somerset Waste Partnership Renew garden waste online NOW!

Got a garden waste collection? Your service, extended due to last year's COVID disruption, runs out by Saturday 8 May. Renew now to avoid a gap; there is no amnesty or grace period. Best way

to pay is online. Starting a subscription? Sign up online or, if you prefer, buy garden waste sacks and order pick-ups to suit you via somersetwaste.gov.uk's My Waste Services menu. In-cab technology to identify paid-up subscribers means the service will be stickerless from 10 May, and improved routes means some subscribers will get a letter with a different collection day.

More:
somersetwaste.gov.uk/gardenwaste-collections/

In Touch with...
Walton

Issue 68 MAY 2021