

In Touch With... Walton

Life and News in Walton Village

AUGUST 2021 Issue 69



From the Chairman,

Summer is here at last, and with it the opportunity to make the most of our beautiful countryside. Many people have noticed some of the new kissing gates that have made the local footpaths easier to access for many of the residents and we have received a number of messages of thanks for them. There will soon be easier access to the wildlife area at East Mead, near to the allotments, with a quiet sitting area and great views. Some of the Equipment in the play park will shortly get a fresh coat of paint to protect it and cheer it up, so that the local children can enjoy the outdoors whilst getting some safe exercise.

These and other initiatives that improve our daily lives, as well as activities that protect our existing environment, are all managed, funded and on occasion undertaken by the Parish Council.

Robert Jenrick, the Local Government Secretary, has announced that, subject to parliamentary approval, a single Unitary Authority will replace the District Councils in future. It is not yet clear what additional powers will be given to Parish Councils, but it is an interesting time to be involved in decisions that will make a difference to the lives of Walton residents and those in Somerset generally. If you would like to contribute, please do apply to become a Councillor. If you would like any information, do not hesitate to contact any of us.

In the meantime, I hope you all get time to make the most of the sunshine and our beautiful location.

John Harvey

! Please Note !
There will be no village fun day this year.



Our new Clothing Bank

On Thursday 15th July a new clothing bank had arrived at the village hall car park, next to the park. This clothing bank is for the use of the community and all

proceeds raised from it will go to the Walton Trust. The trust will receive 30p per Kg each month (£300 per ton collected). The money will go towards the maintenance and upkeep of the village hall and its grounds.

What can be taken (Good condition/ re-usable)

- Clothing (adults & children), aired shoes, handbags, Belts, Soft Toys, Bedding (Bed sheets, duvet covers)

What cannot be taken

- Items that are wet, damaged, or stained, Pillows and Duvets, Cushions, Books, Bric-a-brac, Electrical Items

Walton W.I.

Following the further easing of Covid restrictions, we have been able to continue Monday afternoon croquet sessions for more of our members and our table tennis players have returned to Walton Village Hall for their Tuesday afternoon games. In July, our craft enthusiasts also resumed weekly Friday morning meetings in Street.

We have had two Garden Visits: the first to Coxley Manor where the gardens were opened to visitors for just one Sunday afternoon in June



and the second to Abbey Farm in Montacute in July.



During lockdown four new members joined. Later in July our AGM, attended by 30 members and our County Chair, began with a minute silence in memory of former members recently deceased. It was a social evening when all the lockdown files could be viewed, the contents of which had been posted on our private Facebook page over the past sixteen months. On display were the County Denman Cup trophy recently awarded to one member

for her short story written in 2019, and a comprehensive collection of albums etc. compiled by our retiring President, Liz Brown, covering her time as a long-term member. During the evening, we welcomed another prospective new member, several ladies received awards, raffle prizes were distributed, and, after tea and cake, the entertainment was an amusing skit. Having handed over to our new president, Shirley Routley, Liz received a bouquet and card presented by a founder member, Liz Selway.



Our next meeting will be a picnic in the grounds of Walton Village Hall on Thursday 12th August where members are asked to bring their own food, drinks, and chairs. Many shielding ladies will also be able to attend.

A

ll being well, we will then continue with a full programme inside starting with our meeting On

Thursday 9th September at 7.30pm when the booked speaker will be Richard Raynsford who will be comparing the 'Landscapes & Buildings of Somerset & Dorset' and the competition will be a 'Dorset Souvenir'.

New members are always welcome.

A39 Pavements - and others

All residents realise how narrow the pavements along the A39 are in some areas and how hazardous they can be, especially if you need to use a mobility scooter, have a pram or pushchair or are simply walking with children. Other village

roads are also difficult to negotiate.

Following concerns raised by residents, and an invitation to see what it was like, two parish councillors recently investigated and attempted to navigate the pavements using a mobility scooter,

The answer is as

expected, that it is difficult and felt very hazardous, not just due to the width of the pavements, but also due to overgrowing vegetation and in some places the camber of the pavements. Some of these issues have no current solution but some of them do. The parish council is looking at where dropped curbs are needed, and how the camber in some areas could be changed so that people do not feel as if they are going to topple into the road, and any risk of that happening is reduced.

You can help by ensuring that any vegetation in your garden is kept trimmed well back from the pavement, and ensuring that any greenery growing outside your property does not obstruct the already narrow pavements.

Thank you



Village Play Area Closure for Summer maintenance

The play area at Meadow Lane will be closed for Summer maintenance on either

**The weekend of 21st / 22nd August
Or**

**The weekend of 28th / 29th August
Subject to weather**

POT HOLES

Potholes or other road faults can be reported directly to the County Council at :
WWW.SOMERSET.GOV.UK

Under the roads and transport section

WALTON IN BLOOM - GARDENS



This is the annual competition when all gardens visible from the road are automatically entered. This competition was judged this year on a wet and windy Friday 30th July.

The Best Overall Garden goes to 14 Badgers green for a well manicured garden with colourful blooms and trees to provide shade.

The Best Containers goes to 17 Chancellors Road for the beautiful display of a range of both floor and wall mounted containers with bright coloured planting.



The Best Hanging Basket[s] category goes to 57 Main Street for three matched and perfectly purple baskets. Finally the most unusual garden is awarded to



2 Badgers Green for the well manicured planting in shades of green. There were many gardens around the village with colourful borders and a growing number of containers being used to create splashes of colour.

WALTON IN BLOOM - THE ALLOTMENTS

The allotments were judged at the end of June this year. There are two categories, the Cornucopia award for the plot with the widest range of good, well grown produce, and the Special award for a plot that captures the judges attention in some way.

Cornucopia award 2021 goes to plot 17 for "a very good flower display and a good variety of vegetables in excellent condition". The runner up is plot 21 for "a good variety of crops and very tidy excellent bird scarers and allotment number."



The Special award 2021 goes to plot 20, "Very neat and tidy and a lot of hard work put into this. The grass path is extremely well-kept". The runner up is plot 23 "Allotment looking neat and tidy. A good crop of potatoes."



WALTON TEXTILE GROUP [WTG]

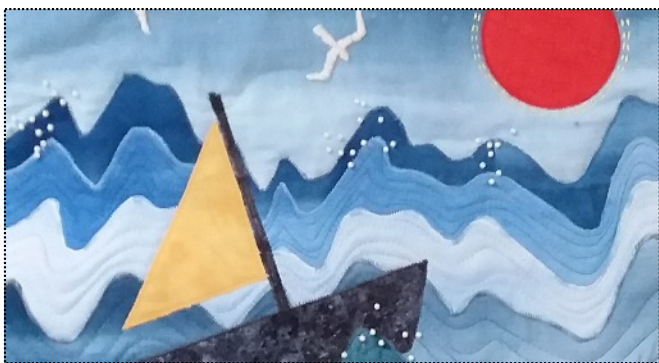
The group has continued to meet occasionally on Walton Playing field behind the village hall.

Support and friendship has always been the basis of WTG which was formed to share skills and ideas with other stitchers but also provide the opportunity to be inspired creatively and to try different things.



Now that life is beginning to return to normal, we have shared ideas about how the group will move forward. In 2021/2022, there will

be informal sessions with opportunities to show and discuss work as well as taught sessions when members share their skills and ideas with occasional workshops led by other tutors.



Our new term, expected to be in Walton Village Hall, will commence **the second Monday in September (13th)** when ideas for the programme will be discussed. Please email waltontextiles@gmail.com if you are interested in joining us.

Neighbourhood Watch

During all summer periods, the criminals see it as a bonus period because warm days and nights encourage us to



leave windows open at night and doors unlocked whilst we are 'just out in the garden'. It also means criminals are less likely to bump into a householder when they make their quick entry into our property.

Most house insurance policies specify locking windows and some insurance claims have been refused because a burglar could not have got in if the window had been locked. This applies mainly to ground floor windows so make sure they are shut up at night.

The number and type of frauds continue to rise with online shopping fraud being one of the most widespread. Firstly be absolutely sure you are buying from a genuine source but be very wary of subsequent e mails which claim to be from the delivery company requesting you click on a link to either reschedule the delivery or pay for an underpaid delivery charge.

With the relaxation of international travel restrictions, there will be an increase demand for proof of COVID testing and fraudsters are cashing in on this by offering reasonably priced tests for holiday makers. By the time you realise you have paid and the test was bogus, it is too late and likely to impact on your travel plans. If something sounds too good to be true, it probably is.

Bob Musgrave

OUR LOCAL FUND RAISERS...

Margaret Pletts and friends

On Saturday 15th of May at 6 am, a cold, wet and windy day, Margaret Pletts and friends set off from Walton to walk 26 miles in aid of breast cancer, The Moon Walk. They wore pink bras, tattoos et cetera and were unmissable as they circled Walton, Street, Ham Wall and Glastonbury. Congratulations to them for completing the distance, returning home soaking wet, and raising over £1100 for the charity.

James Neal and friends



I just wanted to say a massive thank you to everyone who support us and made donations for our ride from John O'Groats to Lands End.

In total we each cycled just over 929 miles with an elevation of 47000ft. It took us 8 ½ days (63 hours and 44 mins moving time on

the bike). We had lots of highs and a few lows. Will was knocked off his bike on day 8 and suffered some bumps and bruises, but



luckily he was able to carry on. We all suffered minor injuries and niggles, but the biggest challenge was probably the exhaustion. Between us (and with your support) we have raised over £4600 for the Great Western Air Ambulance Charity. This money makes a huge difference to GWAAC (who are based at Almondsbury, Bristol, and cover Bristol, Bath and North East Somerset, North Somerset, Gloucestershire, South Gloucestershire, and parts of Wiltshire. They also support neighbouring areas including

Somerset and Wales) and will cover a month of fuel for the helicopter, Helimed 65. Below is a link to our JustGiving page where you'll be able to find Strava links with our routes and some of the updates and photos we posted throughout our challenge (not a holiday!), including the iconic Signpost photos at both ends!

<https://www.justgiving.com/jogle-june21>

Jon Witney and Claire Costanza

If somebody had said to us a few years ago that we would be running a marathon, we would have laughed at them. But on the 3rd October this year that is exactly what we will be doing. We will be running the Virtual London Marathon, 26.2 miles starting and finishing in Walton. Please wave if you spot us!



Earlier this year we decided to challenge ourselves and we signed up to run the Virtual London Marathon all 26.2 miles of it! We are doing this in aid of 2 amazing charities, trying to raise awareness and support them in these challenging times.

SADS- Sudden Arrhythmic Death Syndrome and The Young Minds Charity.

If you can donate to our fundraising, we would be extremely grateful.

[https://www.sponsorme.co.uk/clairecostanza-\(1\)/virtual-london-marathon.aspx](https://www.sponsorme.co.uk/clairecostanza-(1)/virtual-london-marathon.aspx)

Matt Nelson

After 32 weeks of training, Matt Nelson finally headed up to Nottingham to compete in the



Outlaw Triathlon on Sunday 25th July.

Around 1400 competitors signed up for the 2.4 mile swim, 112 bike ride and 26.2 mile marathon run. With a 6am swim start, Matt was in for a long day and finally crossed the finish line just under 12 hours later. He is now looking for his next challenge to keep him amused over the next few months.

Walton Community SpeedWatch

You may have seen us out in our high viz jackets.....our aim is to raise speed awareness and reduce the speed of traffic travelling through the village. We appreciate the regular support of PCSO Tim Richards and have also been joined recently by Dave Bates, the motorbike officer from the Speed Enforcement Unit (SEU).



Walton SpeedWatch team has been out around 10 times every month since March and we have been the most active team in Mendip in 2021 to date. Reports on speeding vehicles are submitted after every session and these are followed up by the police. The Parish Council purchased two Community Speedwatch signs for the village earlier this year (see photos) and the PC is looking into the purchase of an additional Speed Information Device (SID) which will provide valuable information on the speeds of all cars.

We would welcome more volunteers to join the Speedwatch team. Any time you can offer would be invaluable.

Mobile speed camera visits

The police also continue to visit with the mobile speed cameras and their visits can be targeted time wise using the

data provided by the Community Speedwatch group. Late evening checks by mobile speed cameras also continue on a random basis.

Speed Indicator Devices

The fixed speed indicator at the Eastern end of the village has now been repaired and the Parish Council is looking into a further device for the Western end of Main Street.

If you would like to join the Walton Community Speedwatch

Our email address is:
waltonspeedwatch@gmail.com



Just a new bench..

A new bench has been installed in one of the small green areas around the village - this is part of the Greening Walton project and was grant funded by the HPC Community fund and the Somerset Community Foundation.



Is there a small green area near you that might also be improved in some way? perhaps by a bench, a flower bed or a small tree? Let us have your ideas:

Clerk@waltonpc.org or chat to a councillor.

Walton Village Website: www.waltonpc.org

If there is anything that needs updating or that you would like to see added then please get in touch using the contact form on the website, or email the clerk direct : clerk@waltonpc.org

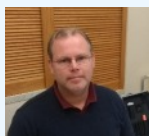
Your Parish Councillors:



Cllr. John Harvey - Chairman



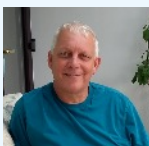
Cllr. Bob Collins vice chairman



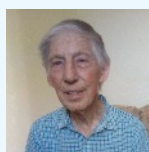
Cllr. Richard Crossman



Cllr. Simon Loader



Cllr. Richard Vowles



Cllr. Bob Musgrave



Cllr. Lisa Whitty



Cllr. M. White

Dates of future monthly parish council meetings: [These are all Fridays]

September 17th 2021
October 8th 2021
November 12th 2021
December 10th 2021

All at 7pm in the Village Hall - all covid 19 regulations will be followed regarding mask wearing and social distancing - and all safety measures put in place by the Walton Trust will be followed.

Could you be a Councillor?

There is currently one vacancy for 1 Councillor
If you are interested or want to know more about what it involves please speak to any current councillor or the parish Clerk

Walton Parish Clerk - Helen Moore

clerk@waltonpc.org
07399 040 667

Walton Parish Council c/o
21 Bere Lane Glastonbury BA6 8BD

Please note that the Clerk works part time and you may not receive an immediate reply

Cllr Matt Martin
Mendip District Council
cllr.martin@mendip.gov.uk
01458 860344



Walton Parish Council parish news - talking about Walton copyright 2004-2021 designed and compiled by H Moore edited by H Moore and J Harvey
Articles are for information or consideration for inclusion in future editions can be sent to the parish clerk. Articles in this newsletter are gathered from the parish council, village and public sources & contributors. The information and views are accepted as factual & honest. Information or views expressed in articles are not necessarily those of the editors or the parish council.

This News letter is printed by the Walton Press

Footpaths...

The footpaths around the local area continue to be well used and any issues with them can either be



reported to the parish council or directly to Somerset County Council on their interactive map. At <https://www.somerset.gov.uk/waste-planning-and-land/public-rights-of-way/>

SMALL GRANTS TO VILLAGE GROUPS AND ORGANISATIONS

Walton parish council invites applications for grants to organisations and activities that contribute constructively to, and enhance, the life and community of Walton.

Current applications will start to be considered in September and therefore if you would like to apply please contact the Parish Clerk for an application form.